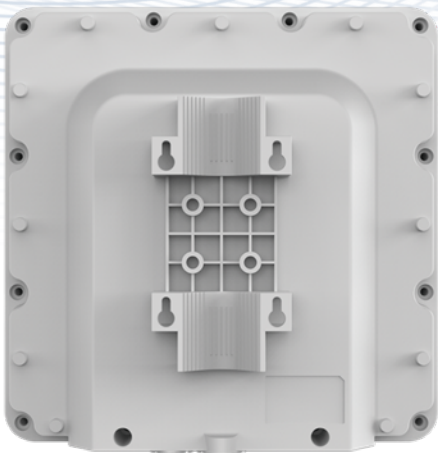


CP680 CPE DATASHEET



CP680

LTE Outdoor CPE

3GPP Release 10/11

CAT6

All LTE Bands

PoE

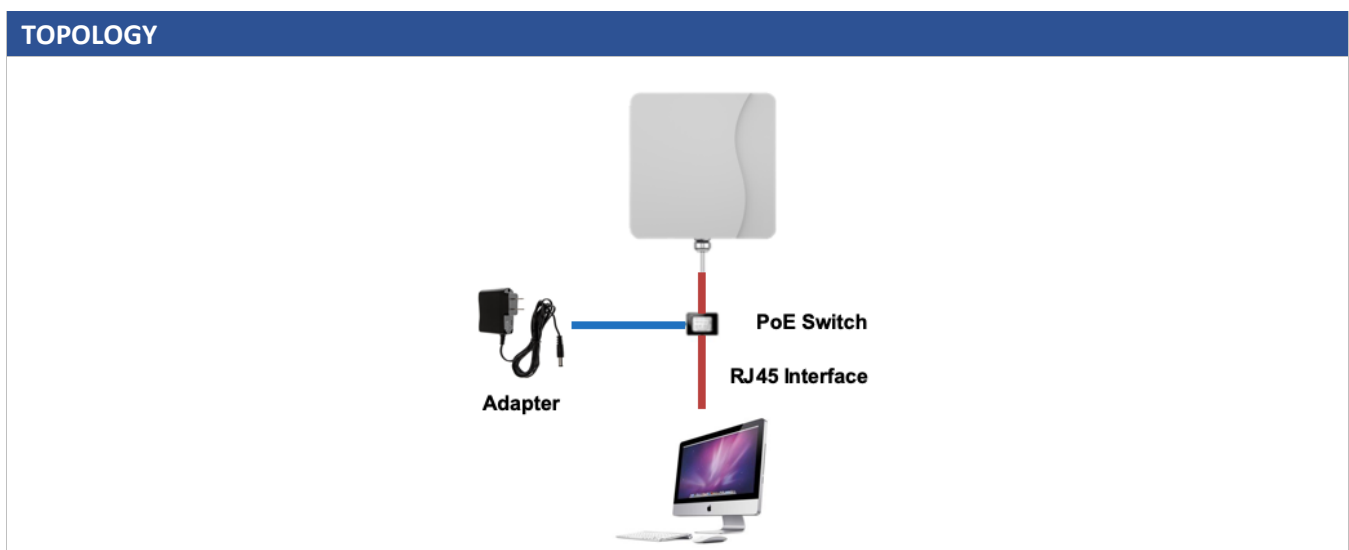
IP67

The CP680 from SUNWAVE is a high-performance outdoor LTE CPE. The product provides a high throughput data transmission network for residential, commercial and enterprise users. Customers enjoy an easy plug & play broadband access solution and large area coverage for various network service scenarios.

CP680 CPE DATASHEET

CELLULAR SPECIFICATIONS		
LTE Standard	3GPP Release 10/ 11, CAT 6	
Peak Throughput	FDD: DL 300 Mbps; UL 75 Mbps	
	TDD: DL 220 Mbps; UL 50 Mbps	
LTE Bands*	Option 1	B1/3/7/8/(17)/20/(28)/38/(40)/41/42/43/48
	Option 2 (Prototype)	B2/4/5/8/12/14/17/25/26/38/41/42/43/48/66
	Option 3	B42/43/48
	Option 4	B7/38/41
Carrier Aggregation (CA) and MIMO	CA: 2 CA Intra- or Inter-band	
	MIMO: DL 2 x 2 MIMO/ 4 X 4 MIMO	
Tx / Rx	1Tx / 4Rx	
Transmit Power	Power Class 3 (23 ± 2dBm)	
LTE Antenna	4 directional antennas	
LTE Antenna Gain	Option 1	700 MHz ~ 1 GHz: 6 dBi 1.7 GHz ~ 2.1 GHz: 7 dBi 2.3 GHz ~ 2.7 GHz: 9 dBi 3.4 GHz ~ 3.8 GHz: 8 dBi
	Option 2	700 MHz ~ 1 GHz: 6 dBi 1.7 GHz ~ 2.1 GHz: 7 dBi 2.3 GHz ~ 2.7 GHz: 9 dBi 3.4 GHz ~ 3.8 GHz: 8 dBi
	Option 3	3.4 GHz ~ 3.8 GHz: 15 dBi
	Option 4	2.5 GHz ~ 2.7 GHz: 13 dBi

*The frequency bands in () are not included in the conventional sample.



CP680 CPE DATASHEET

HARDWARE SPECIFICATIONS	
Fixed Interfaces	1 x RJ45 10/ 100/ 1000Mb/s
	1 x SIM slot (1.8V/ 3.0V 2FF)
LED Indicator	4 LED indicators (PWR, NET, SIM, RF signal)
Button	Reset and restore factory setup
Power Supply	24V non-standard POE default
	IEEE 802.3at compatible POE customized
Power Consumption	< 8W
Power Adapter	Input: AC 90 ~ 240V
	Output: DC 24V/ 0.5A
Water and Dustproof	IP67
Dimensions and Mounting	Dimensions: 288 mm x 288 mm x 82 mm 11.3 in x 11.3 in x 3.2 in
	Weight: < 2 kg 4 lbs
	Mounting: rail and wall mounting
Temperature and Humidity	Operating: -30 °C ~ +60 °C -22 °F ~ +140 °F
	Storage: -40 °C ~ +85 °C -40 °F ~ +185 °F
	Humidity: 5% ~ 95%

SOFTWARE SPECIFICATIONS	
WAN	Multi-APN support, maximum 4
	IP pass through
	IPv4/IPv6 dual stack
LAN	VLAN 802.1Q
	DHCP server, client
	DNS and DNS proxy
	DMZ
	Multi-cast/ multi-cast proxy
	MAC address filtering
Protocol	Routing: static routing, IGMP proxy
Device Management	TR069
	SNMP v3
	Web UI
	Software upgrade via WEB/ TR069/ FOTA
	USIM PIN management
Routing Mode	Route mode
	Bridge mode
	NAT mode
	Static route

CP680 CPE DATASHEET

	Port mirror and port forwarding
	IPv4/IPv6 dual stack
VPN	IPsec
	PPTP
	GRE tunnel (L2/L3)
	L2TPv2 and L2TPv3
	VPN pass-through
Security	Firewall
	MAC address filtering
	IP address filtering
	URL filtering
	Access control
	HTTPS login from WAN
	Dos attack protection
Reliability	2 level of user authority
	Watchdog for automatic recovery
	Auto rollback to previous version when upgrade fails

APPENDIX-DELIVERS

CP680 Outdoor CPE	1 PCS
PoE Injector & Adapter	1 PCS
Accessories for Pole Mounting	1 PCS

Contact Us Today
www.sunwave.com
en.sunwave.com